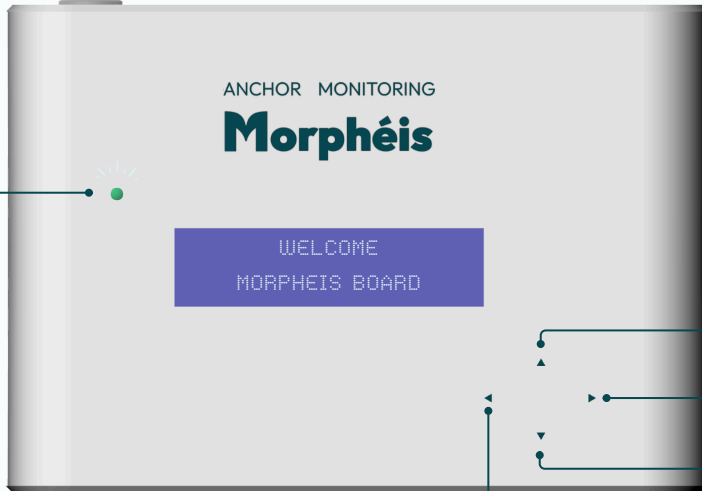


# Morphéis

## INSTRUCTIONS OF USE

ON/OFF  
switch



Up




Next

Down

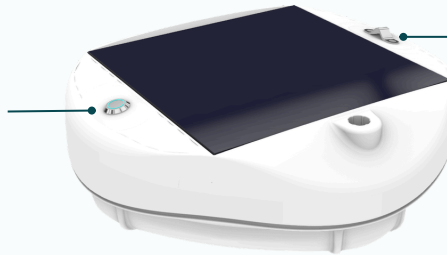
Back

SIM Card &  
USB-C slot

Anchor **status** LED :

| Indicator   | Color                 | Status                                    |
|---|-----------------------|---|
|  | Blue + pink flashing  | GPS search in progress                    |
|  | Green + pink flashing | Anchor stable - enjoy your stop !         |
|  | Red                   | Issue identified - monitoring interrupted |

**ON/OFF switch**  
Blue **flashing** : power  
mode  
**Steady blue** : on charge



Soft shackle  
attachment

## Start anchor monitoring

- Switch ON the buoy unit with a short press of the switch.
- Place it on the buoy : it holds with magnets, and the soft shackle if you wish.
- Attach the swivel to the anchor. Drop the anchor, then the buoy.
- Turn on the boat's receiver and select "**Start Anchoring.**"

## Stop anchor monitoring

- Retrieve your buoy using the boat hook.
- Detach the buoy unit and turn it OFF with a long press of the switch.

## Phone number setup

- With the boat unit turned OFF, insert your SIM card.
- Turn it ON, then go to Settings > Phone > Phone 1 (or 2) > Next.
- Enter your phone number using the up/down arrows, and press Enter.



**Rinse** your buoy with fresh water regularly.



Do not use Morphéis at depths **greater than 23 meters.**

Enjoy your stop, **Morphéis** keeps an eye on **your anchoring!**